

Roxset[®]

HEALTH & SAFETY FLOORING

Floor Coving Options & Profiles



1

Concrete Hob with 45 Degree slop to Channel Section

Aluminium Base Channel

Roxset SE Epoxy Mortor 6mm lay up

Insulated panel (Coolroom panel)

Concrete hob 150 - 200mm high

Radius 50-100mm

16mm Starter bar x 200mm lg

Roxset SE Epoxy floor coating

Existing floor

Dimensions : 150mm - 350mm high - Radius : 50mm - 100mm

2

Channel top concrete hob

Aluminium Base Channel

Roxset SE Epoxy Mortor 6mm lay up

Insulated panel (Coolroom panel)

Concrete hob 150 - 200mm high

Radius 50-100mm

Roxset SE Epoxy floor coating

16mm Starter bar (200mm)

Existing floor

Dimensions : 150mm - 200mm high - Radius : 50 - 100mm

3

Aluminium arrow head section to cool room panel

Insulated panel
(Coolroom panel)

Aluminium
arrow head

Radius 50-100mm

Existing floor

Aluminium Base Channel

Aluminium
arrow head

Roxset SE Epoxy
Mortar 6mm lay up

Roxset SE Epoxy
floor coating

Radius : 50 - 100mm

4

Concrete to Aluminium arrow head freezer set out

Aluminium
arrow head

Roxset SE Epoxy
Mortar 6mm lay up

Radius
50-100mm

Concrete hob
150 - 200mm high

16mm Starter bar (200mm)

Structural Slab

Insulated panel
(Coolroom panel)

Aluminium
arrow head

Roxset SE Epoxy
floor coating

Concrete wear slab

Dimensions : 100mm - 300mm high - Radius : 50 - 100mm

The Roxset Difference

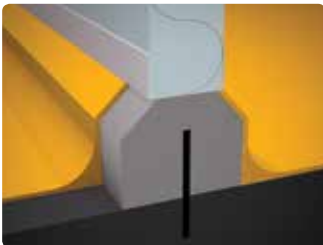


- ✓ Long term underfoot anti-slip solutions to ensure OH&S is maintained
- ✓ Rapid high volume out of hours installation service available 24 x 7
- ✓ Mobility servicing remote areas including rural areas & overseas locations
- ✓ Detailed heavy duty epoxy to coving, penetrations, hobbs & drainage
- ✓ Proven success in the industry with over 30 years experience
- ✓ **Re-engineer and construction of flooring and coving to ensure a seamless result**
- ✓ Colour options with the ability to custom match any corporate colour desired
- ✓ High grade chemical resistance to blood, fats and oils and will not harbour bacteria
- ✓ Correct falls to floor wastes to ensure a protective impervious finish
- ✓ Waterproof jointing and protection from moving heavy traffic vehicles

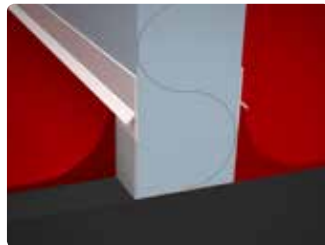
Floor Coving Options & Profiles

Our coving technology connects walls to floors to create a seamless impervious 'One Surface' solution

By using wall to floor coving, it results in an easily cleaned and waterproof surface. All Roxset floor coving has a hand trowel smooth impervious finish. We can also create coves over any existing metal/steel structural fixtures that join the floor to assist in reducing any further deterioration of the equipment or structural beams due to the use of cleaning chemicals over time.



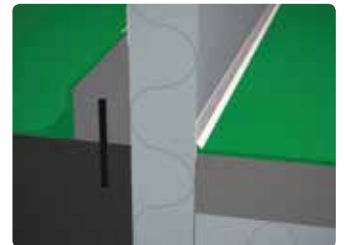
Concrete hob with 45° slope to channel section



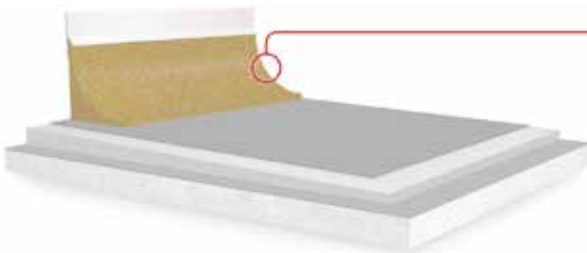
Aluminium arrow head section to cool room panel



Channel top concrete hob



Concrete to aluminium arrow head freezer set out



Features & Benefits

- Seamless floor to wall connectivity
- Eliminates cracks & bacteria growth
- Easy to clean & maintain
- Meets regulatory requirements with HACCP, AQIS, Food Safe & DPI & BRC



Roxset is a food grade flooring system compliant with TGA, HACCP, BRC, AQIS & FSANZ. It provides an attractive, resilient and robust surface with an impervious finish.

Roxset[®]